

ENGLISH

# Visitor Guide





# Welcome to the Asian Art Museum

Awe-inspiring artworks ranging from ancient jades to contemporary installations immerse you in the magnificent artistic achievements and intriguing history of the world's most populous continent.

## Plan Your Visit

### **COLLECTION GALLERIES**

The heart of the Asian Art Museum is its world-class collection. Explore a rotating selection of more than 2,000 artworks from all the major cultures of Asia on the second and third floors. We recommend starting on the third floor in Gallery 1, dedicated to early works from South Asia.

### **SPECIAL EXHIBITIONS**

Temporary exhibitions spotlighting an artist or theme offer unique viewpoints and rare opportunities to discover outstanding works on loan from other museums and private collections. Find major special exhibitions on the first floor in the Yang Yamazaki Pavilion, Osher Foundation Gallery, and Lee Gallery, and in the Tateuchi Gallery on the second floor. Check lobby screens to find out what's on view.

### **SPECIAL COMMISSIONS**

Visit the Fang Family Launchpad, the East West Bank Art Terrace, and the Lui Art Wall to find a rotating selection of site-specific works commissioned from contemporary artists.

### **DAILY GUIDED TOURS**

Get more out of your visit with a lively and informative tour led by a trained docent. Check lobby screens for times; meet your docent at the information desk.

### **MOBILE GUIDE**

Get more out of your visit with our self-guided multimedia tours, available on the free Asian Art Museum app.

### **PROGRAMS**

From storytelling tours for kids to art-making workshops for all ages, there's always something happening at the museum. Check lobby screens for today's programs.

### **HANDS-ON PROJECTS**

Learn by doing! Get creative with self-directed hands-on activities inspired by special exhibitions, daily in the Shriram Learning Center.

### **EAST WEST BANK ART TERRACE**

Take a break on our rooftop terrace, a sculpture garden in the sky.

### **STASH YOUR STUFF**

Check your coat or bag, or borrow a wheelchair or stroller, at the Marver Concierge Station.

### **SHOP**

Head to our boutique for an expertly curated selection of items sourced from across Asia and from local artisans, plus an unparalleled selection of books about Asia and Asian art.

### **EAT**

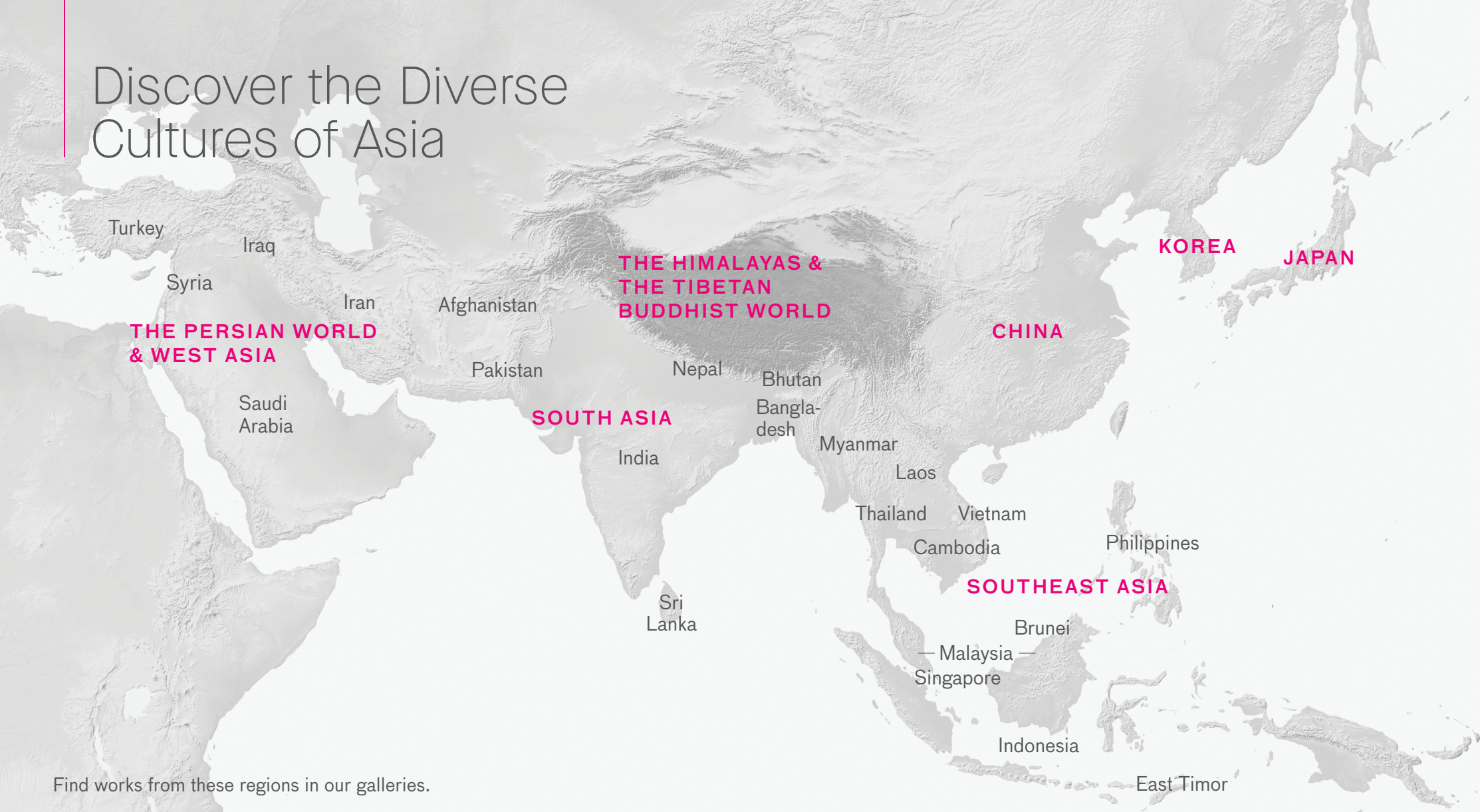
Sample the flavors of Asia at our cafe, Sunday at the Museum featuring Boba Guys, or grab a drink or snack at the art terrace cafe.

### **SNAP AND SHARE #MuseumDifferently @AsianArtMuseum**

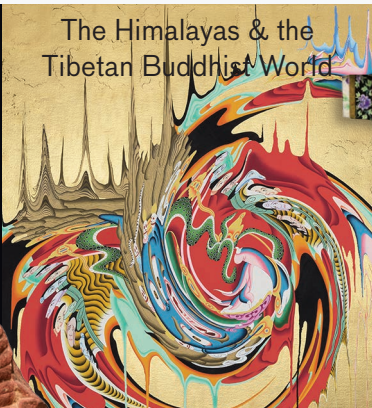
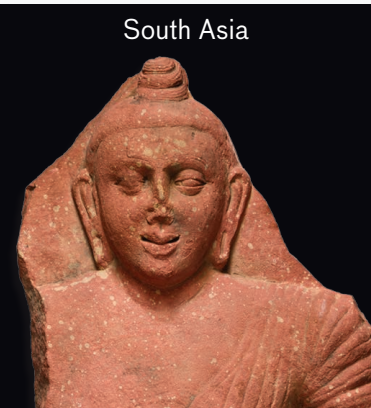
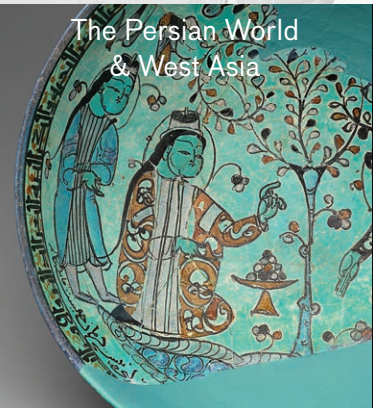
We encourage taking photos for your personal use (unless otherwise marked) and be sure to share your experience with us on social media. (Please, no flash, selfie sticks, or tripods.)



# Discover the Diverse Cultures of Asia



Find works from these regions in our galleries.





FIND  
YOUR  
OWN  
PATH

# Short on Time?

Discover exceptional works — singled out for their rarity, beauty, or historical significance — by following the path of masterpieces through our collection galleries.



The Buddha  
triumphing over Mara  
GALLERY 2



The Hindu deity Shiva  
GALLERY 4



Cup with calligraphic  
inscriptions  
GALLERY 5



The Buddhist  
deity Simhavaktra,  
a *dakini*  
GALLERY 12



Ritual vessel in the  
shape of a rhinoceros  
GALLERY 14

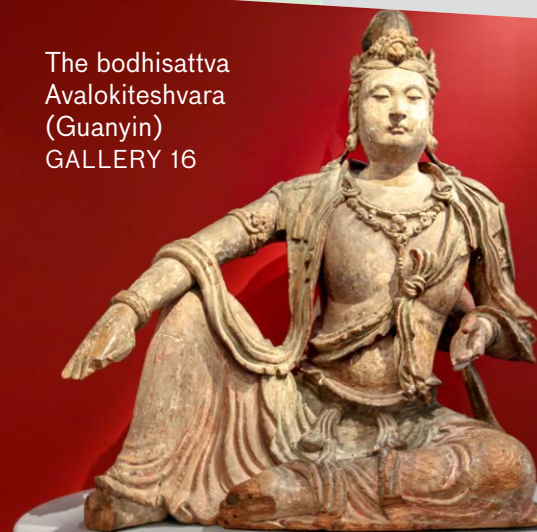


Buddha dated 338  
GALLERY 16



Lidded jar with design  
of a lotus pond  
GALLERY 17

The bodhisattva  
Avalokiteshvara  
(Guanyin)  
GALLERY 16



Ewer with  
lotus-shaped lid  
GALLERY 21



The Hindu deity Vishnu  
GALLERY 8



Crowned and bejeweled  
Buddha image and throne  
GALLERY 9



Moon jar  
GALLERY 23



The deities Brahma and Indra  
(Bonten and Taishakuten)  
GALLERY 26

## Want More?

Take a self-guided  
tour of 55 highlights  
from our collection.  
Download the [Asian  
Art Museum app](#) on  
your phone.





FIND  
YOUR  
OWN  
PATH

## Looking for Contemporary Art?

Explore a rotating selection of modern and contemporary works from the collection in the **Hambrecht Contemporary Gallery** (first floor).

Head to the loggia for **Liu Jianhua's *Collected Letters*** and installations by contemporary artists in the **Fang Family Launchpad** (second floor).

Find outdoor sculptures by Ai Weiwei and others on the **East West Bank Art Terrace** (second floor).

Check out murals on the **Lui Art Wall** to see what makes local artists tick (Hyde St.).

Let our curators lead the way with our **Contemporary Art mobile guide tour**. Download the tour from the free [Asian Art Museum app](#).

FIND  
YOUR  
OWN  
PATH

## Visiting with Kids?

Pick up an **Art Adventure Pack** at the information desk to explore shape, line, and color.

Track animals in the collection galleries with our **Art Cards**; borrow from the information desk.

Take a family selfie with **Reina**, our 3,000-year-old bronze rhino (Gallery 14).

Get hands-on and express yourself in the **Shriram Learning Center** (first floor).

Dragon, turtle, pumpkin, or mouse? Find your favorite **Japanese miniature carving** (netsuke) (Gallery 27).

Myths and tales from Asia come alive with **Sunday Storytelling**, Sundays at 1 p.m. (meet at information desk).







FIND  
YOUR  
OWN  
PATH

## Want to Chill?

Find enlightenment with our **Meditative Art** mobile guide, available on the free [Asian Art Museum app](#).

Purify your mind in the **Betty Bogart Contemplative Alcove** (second floor).

**Unwind in the cafe** with a pot of hot tea or a chilled glass of boba (first floor).

Relax, reflect, and refresh on the **East West Bank Art Terrace** (second floor).

Keep your hands busy and your mind calm in the **Shiram Learning Center** (first floor).

FIND  
YOUR  
OWN  
PATH

## Into Architecture?

Be awed by the **Wilbur Grand Staircase**, the centerpiece of our historic Beaux-Arts building, designed in 1917 as the city's main public library.

Take in the elegantly coffered ceiling of lofty **Samsung Hall**, which formerly housed the library's card catalogue (second floor).

Relax in the airy and spacious **Bogart and Bowes Courts** designed by Italian architect Gae Aulenti, who remodeled the former library to be the home of the Asian Art Museum in 2003 (first floor).

Step out onto the **East West Bank Art Terrace** for a new perspective on the city skyline (second floor).

Head over to Hyde Street to see the dynamic faceted exterior of architect Kulapat Yantrasast's striking 2020 addition, the **Akiko Yamazaki and Jerry Yang Pavilion**.





## While You're Here

- **Help us protect the art** — look, but do not touch.
- **Please no food or drinks in the galleries.**
- **Please silence cell phones** and refrain from phone conversations in the galleries.
- **Still photography for personal, noncommercial use is allowed in the collection galleries** (please no flash, selfie-sticks, or tripods). Photography may not be allowed in some special exhibitions.
- **Sketching or note-taking with a pencil is permitted** in the galleries.
- **Strollers are allowed**, but you may be asked to park them when the museum is crowded.
- Please be aware that **you may be photographed or filmed by museum staff during your visit** and that we may use these images in online or printed museum materials.

## Join Today

**Apply today's ticket price toward a membership and get free admission all year long.**

The benefits of Asian Art Museum membership include free unlimited admission, a members-only line for quick and easy entry, priority registration for certain programs, discounted parking, cafe and boutique discounts, and more.

For more information or to join, stop by the membership desk in the lobby or visit us online at [give.asianart.org](http://give.asianart.org).

## Group Visits

Groups enjoy discounted admission and express entry into the museum, as well as the option of a private docent tour. For more information or to reserve, contact us at [groupvisits@asianart.org](mailto:groupvisits@asianart.org) or 415.581.3620.

## A Museum for All

**We strive to make the Asian Art Museum accessible and welcoming to all.**

- Trained guide and service animals are welcome.
- Large-print labels are provided in special exhibition galleries.
- Foldable, portable stools are available for use throughout the galleries.
- Request Assistive Listening Devices (ALDs) for daily tours from your docent.
- Braille floor plans are available at the information desk.
- Noise-dampening headphones are available at the information desk.
- Audio descriptive guides and transcripts for our blind and low-vision visitors are available in multiple languages from the information desk.
- For any other needs, please ask at the information desk.
- Check our website for a complete list of our accessibility initiatives.



# At a Glance

## FIRST FLOOR

Special Exhibition Galleries:

Yang Yamazaki Pavilion  
Wilbur Gallery  
Lee Gallery  
Osher Gallery

Hambrecht Contemporary Gallery  
Shriram Learning Center  
Koret Education Center  
Boutique  
Cafe

## SECOND FLOOR

Collection Galleries:

China  
Korea  
Japan

Samsung Hall  
East West Bank Art Terrace / Sun Art Terrace Cafe  
Fang Family Launchpad  
Liu Jianhua's *Collected Letters*  
Tateuchi Gallery (Special Exhibitions)

## THIRD FLOOR

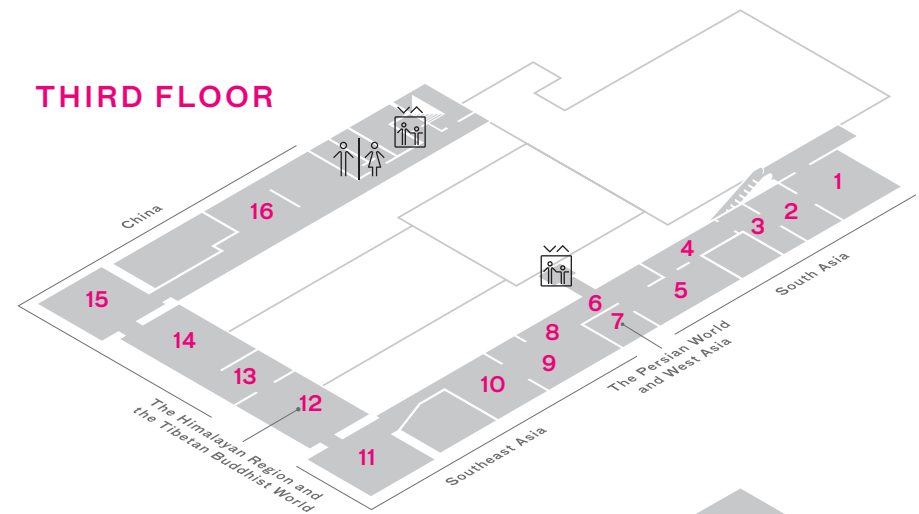
Collection Galleries:

South Asia  
The Persian World and West Asia  
Southeast Asia  
The Himalayas and the Tibetan Buddhist World  
China

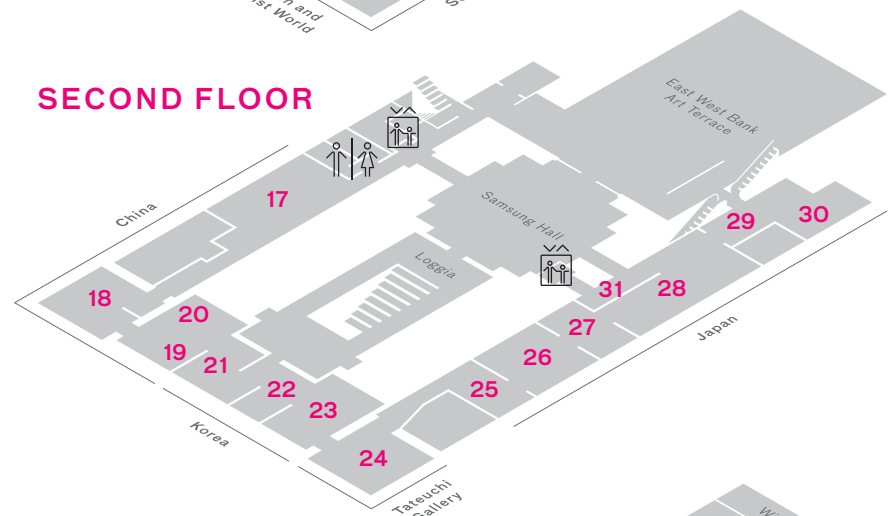
## EXTERIOR

Lui Art Wall  
Osher Plaza  
Village Artist Corner

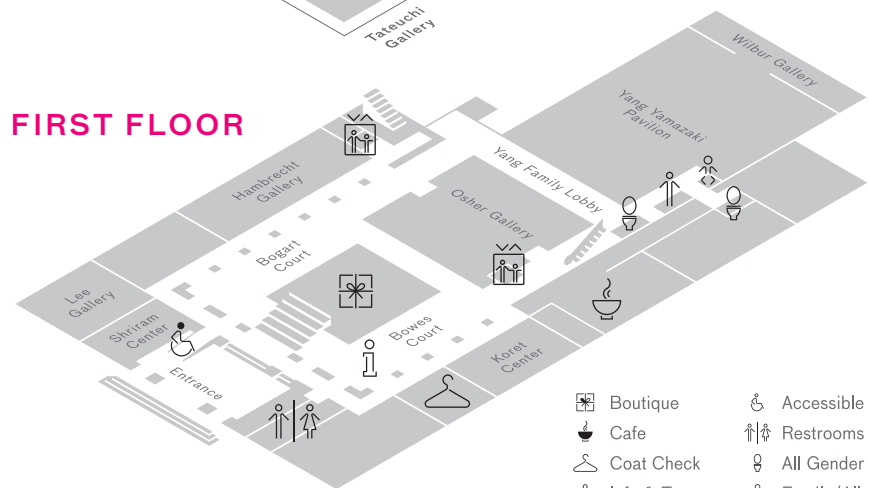
## THIRD FLOOR



## SECOND FLOOR



## FIRST FLOOR



- |              |                            |
|--------------|----------------------------|
| Boutique     | Accessible Ramp            |
| Cafe         | Restrooms                  |
| Coat Check   | All Gender Restroom        |
| Info & Tours | Family/All Gender Restroom |
| Elevator     |                            |



The Asian Art Museum of San Francisco connects art to life. Our mission is to inspire new ways of thinking by connecting diverse communities to historical and contemporary Asian art and culture through our world-class collection, exhibitions, and programs.



ASIAN ART MUSEUM  
Chong-Moon Lee Center  
for Asian Art & Culture  
[www.asianart.org](http://www.asianart.org)

200 Larkin Street  
San Francisco, CA  
94102  
T 415.581.3500

Visit [www.asianart.org](http://www.asianart.org) for current hours.  
Closed January 1, Thanksgiving Day, and December 25.



#MuseumDifferently  
@AsianArtMuseum

All Photographs © Asian Art Museum. Page 1: Installation view of *Tanabe Chikuunsai IV: Connection* at the Asian Art Museum, 2019. Page 3: Bowl with figures, 1187. Iran; Kashan. Composite-body ceramic (fritware) with underglaze painting and overglaze enamel decoration (minai ware). *Asian Art Museum, The Avery Brundage Collection*, B60P1874. Fragment of a Buddha image, approx. 100–200. India; Mathura region, Uttar Pradesh state. Sandstone. *Asian Art Museum, The Avery Brundage Collection*, B65S10. *The Melt*, 2017, by Tsherin Sherpa (Nepalese, b. 1968). Acrylic, ink, and gold on canvas. *Asian Art Museum, Museum purchase*, 2017.44. © Tsherin Sherpa. Page 4: Manchu woman's robe with peonies and butterflies, before 1920. China. Qing dynasty (1644–1911). Embroidery on twill. *Asian Art Museum, Gift of Dennis and Terry Tsu*, 2007.67. Hilt of dagger (xris), approx. 1850–1950. Indonesia; Bali. Steel, iron, silver, gold, and jewels. *Asian Art Museum, Transfer from the Fine Arts Museums of San Francisco, Gift of Templeton Crocker*, B84W6.a-b. Wrapping cloth (*bojagi*), 1800–1900. Korea; Joseon dynasty (1392–1910). Silk with patchwork design. *Asian Art Museum, Acquisition made possible by Ann Witter*, 2003.14. *Disappear*, 2018, by Tanabe Chikuunsai IV (Japanese, b. 1973). Bamboo (*madake*), wisteria vines, dye, and lacquer. *Asian Art Museum, Museum purchase, Lloyd Cotsen Japanese Bamboo Collection*, 2019.4. Page 5: The Buddha triumphing over Mara, 850–950. India; probably Kurkihar, Bihar state. Basalt. *Asian Art Museum, The Avery Brundage Collection*, B60S598. The Hindu deity Shiva, approx. 1300–1500. India; Tamil Nadu state. Bronze. *Asian Art Museum, The Avery Brundage Collection*, B69S14. Cup with calligraphic inscriptions, 1440–1460. Probably Uzbekistan; Samarqand. Timurid period (1370–1507). Nephrite. *Asian Art Museum, The Avery Brundage Collection*, B60J619. The deity Vishnu, 940–965. Cambodia; former kingdom of Angkor. Sandstone. *Asian Art Museum, The Avery Brundage Collection*, B65S7. Throne shrine for a Buddha image, approx. 1860–1880. Myanmar (Burma); Mandalay area. Lacquered and gilded wood and iron with mirror inlay. *Asian Art Museum, Gift from Doris Duke Charitable Foundation's Southeast Asian Art Collection*, 2006.27.1.a-i. Page Six: Ritual vessel in the shape of a rhinoceros, prob. 1100–1050 BCE. China; unearthed in Shouzhong, Shandong province. Shang dynasty (approx. 1600–1050 BCE). Bronze. *Asian Art Museum, The Avery Brundage Collection*, B60B1+. Buddha dated 338. China; Hebei province. Later Zhao kingdom (319–351). Bronze with gilding. *Asian Art Museum, The Avery Brundage Collection*, B60B1034. Lidded jar with design of a lotus pond, China; Jingdezhen, Jiangxi province. Ming dynasty (1368–1644). Reign of the Jiajing emperor (1522–1566). Porcelain with underglaze cobalt and overglaze multicolor decoration. *Asian Art Museum, The Avery Brundage Collection*, B60P78+. Photograph © Asian Art Museum. The bodhisattva Avalokitesvara (Guanyin), 1100–1200. China. Song dynasty (960–1279). Paulownia wood with pigments. *Asian Art Museum, The Avery Brundage Collection*, B60S24+. Ewer with lotus-shaped lid, approx. 1050–1150. Korea. Goryeo dynasty (918–1392). Stoneware with celadon glaze. *Asian Art Museum, The Avery Brundage Collection*, B60P123+. a.-b. Moon jar, 1650–1750. Korea. Joseon dynasty (1392–1910). Porcelain with clear glaze. *Asian Art Museum, The Avery Brundage Collection*, B60P110+. The Buddhist deity *Sinhavaktra*, a *dokini*, 1736–1795. China; Beijing or vicinity. Hebei province. Qing dynasty (1644–1911). Reign of the Qianlong emperor (1736–1795). Dry lacquer with inlaid semiprecious stones. *Asian Art Museum, The Avery Brundage Collection*, B60S600. The deity Brahma and Indra (Boten and Taishakuten), approx. 730–750. Japan; Nara. Nara period (710–794). Hollow dry lacquer. *Asian Art Museum, The Avery Brundage Collection*, B65S13, B65S12.

