

The Asian Art Museum of San Francisco connects art to life. Our mission is to inspire new ways of thinking by connecting diverse communities to historical and contemporary Asian art and culture through our world-class collection, exhibitions, and programs.



ASIAN ART MUSEUM
Chong-Moon Lee Center
for Asian Art & Culture
www.asianart.org

200 Larkin Street
San Francisco, CA
94102
T 415.581.3500

Visit www.asianart.org for current hours.
Closed January 1, Thanksgiving Day, and December 25.



#MuseumDifferently
@AsianArtMuseum

All Photographs © Asian Art Museum. Page 1: Installation view of *Tanabe Chikunsai IV: Connection* at the Asian Art Museum, 2019. Page 3: Bowl with figures, 1187, Iran, Kashan. Composite-body ceramic (fritware) with underglaze painting and overglaze enamel decoration (minai ware). *Asian Art Museum, The Avery Brundage Collection*, B60P1874. Fragment of a Buddha image, approx. 100–200, India; Mathura region, Uttar Pradesh state. Sandstone. *Asian Art Museum, The Avery Brundage Collection*, B65S10. The Buddha Shakyamuni with the Buddhist elders Bakula and Angaja, 1800–1900. Tibet. One of seven images, colors on cotton. *Asian Art Museum, The Avery Brundage Collection*, B62D38. Page 4: Manchu woman's robe with peonies and butterflies, before 1920. China. Qing dynasty (1644–1911). Embroidery on twill. *Asian Art Museum, Gift of Dennis and Terry Tsu*, 2007.67. Hilt of dagger (kris), approx. 1850–1950, Indonesia; Bali. Steel, iron, silver, gold, and jewels. *Asian Art Museum, Transfer from the Fine Arts Museums of San Francisco, Gift of Templeton Crocker*, B84W6.a–b. Wrapping cloth (*bojagi*), 1800–1900. Korea. Joseon dynasty (1392–1910). Silk with patchwork design. *Asian Art Museum, Acquisition made possible by Ann Witter*, 2003.14. *Disappear*, 2018, by Tanabe Chikunsai IV (Japanese, b. 1973). Bamboo (*madake*), wisteria vines, dye, and lacquer. *Asian Art Museum, Museum purchase, Lloyd Cotsen Japanese Bamboo Collection*, 2019.4. Page 5: The Buddha triumphing over Mara, 850–950, India; probably Kurkihar, Bihar state. Basalt. *Asian Art Museum, The Avery Brundage Collection*, B60S598. The Hindu deity Shiva, approx. 1300–1500, India; Tamil Nadu state. Bronze. *Asian Art Museum, The Avery Brundage Collection*, B69S14. Cup with calligraphic inscriptions, 1440–1460. Probably Uzbekistan; Samarqand. Timurid period (1370–1507). Nephrite. *Asian Art Museum, The Avery Brundage Collection*, B60J619. The deity Vishnu, 940–965. Cambodia; former kingdom of Angkor. Sandstone. *Asian Art Museum, The Avery Brundage Collection*, B65S7. Throne shrine for a Buddha image, approx. 1860–1880. Myanmar (Burma); Mandalay area. Lacquered and gilded wood and iron with mirror inlay. *Asian Art Museum, Gift from Doris Duke Charitable Foundation's Southeast Asian Art Collection*, 2006.27.1.a–t. Page Six: Ritual vessel in the shape of a rhinoceros, prob. 1100–1050 BCE. China; unearthed in Shouzhong, Shandong province. Shang dynasty (approx. 1600–1050 BCE). Bronze. *Asian Art Museum, The Avery Brundage Collection*, B60B1+. Buddha dated 338, China; Hebei province. Later Zhao kingdom (319–351). Bronze with gilding. *Asian Art Museum, The Avery Brundage Collection*, B60B1034. Lidded jar with design of a lotus pond, China. Jingdezhen, Jiangxi province. Ming dynasty (1368–1644). Reign of the Jiajing emperor (1522–1566). Porcelain with underglaze cobalt and overglaze multicolor decoration. *Asian Art Museum, The Avery Brundage Collection*, B60P78+. Photograph © Asian Art Museum. The bodhisattva Avalokitesvara (Guanyin), 1100–1200. China. Song dynasty (960–1279). Paulownia wood with pigments. *Asian Art Museum, The Avery Brundage Collection*, B60S24+. Ewer with lotus-shaped lid, approx. 1050–1150. Korea. Goryeo dynasty (918–1392). Stoneware with celadon glaze. *Asian Art Museum, The Avery Brundage Collection*, B60P123+.a–b. Moon jar, 1650–1750. Korea. Joseon dynasty (1392–1910). Porcelain with clear glaze. *Asian Art Museum, The Avery Brundage Collection*, B60P110+. The Buddhist deity Simhavaktra, a *dakini*, 1736–1795. China; Beijing or vicinity, Hebei province, Qing dynasty (1644–1911). Reign of the Qianlong emperor (1736–1795). Dry lacquer with inlaid semiprecious stones. *Asian Art Museum, The Avery Brundage Collection*, B60S600. The deity Brahma and Indra (Boten and Taishakuten), approx. 730–750. Japan; Nara, Nara period (710–794). Hollow dry lacquer. *Asian Art Museum, The Avery Brundage Collection*, B65S13, B65S12.

ENGLISH

Visitor Guide



Welcome to the Asian Art Museum

Awe-inspiring artworks ranging from ancient jades to contemporary installations immerse you in the magnificent artistic achievements and intriguing history of the world's most populous continent.

Plan Your Visit

COLLECTION GALLERIES

The heart of the Asian Art Museum is its world-class collection of more than 18,000 artworks. Explore a rotating selection of more than 2,000 objects from across Asia on the second and third floors. We recommend starting on the third floor in Gallery 1, dedicated to early works from South Asia.

SPECIAL EXHIBITIONS

Temporary exhibitions spotlighting an artist or theme offer unique viewpoints and rare opportunities to discover outstanding works on loan from other museums and private collections. Find special exhibitions on the first floor in the Yang Yamazaki Pavilion, Osher Gallery, and Lee Gallery, and in the Tateuchi Gallery on the second floor. Check lobby screens to find out what's on view.

SPECIAL COMMISSIONS

Visit the Fang Family Launchpad, the East West Bank Art Terrace, and the Lui Art Wall to find a rotating selection of site-specific works commissioned from contemporary artists.

FOLLOW THE PATH

We've designed a one-way path for social distancing. Follow the arrows for our recommended path through the collection galleries. It will lead you up the escalator to the third floor, looping back down to the second and first floors.



MOBILE GUIDE

Get more out of your visit with our self-guided multimedia tours, available on the free Asian Art Museum app. Use the QR code to download today.



INFORMATION

Stop by the information desk to ask a question or borrow a wheelchair, stroller, or stool. We're here to help.

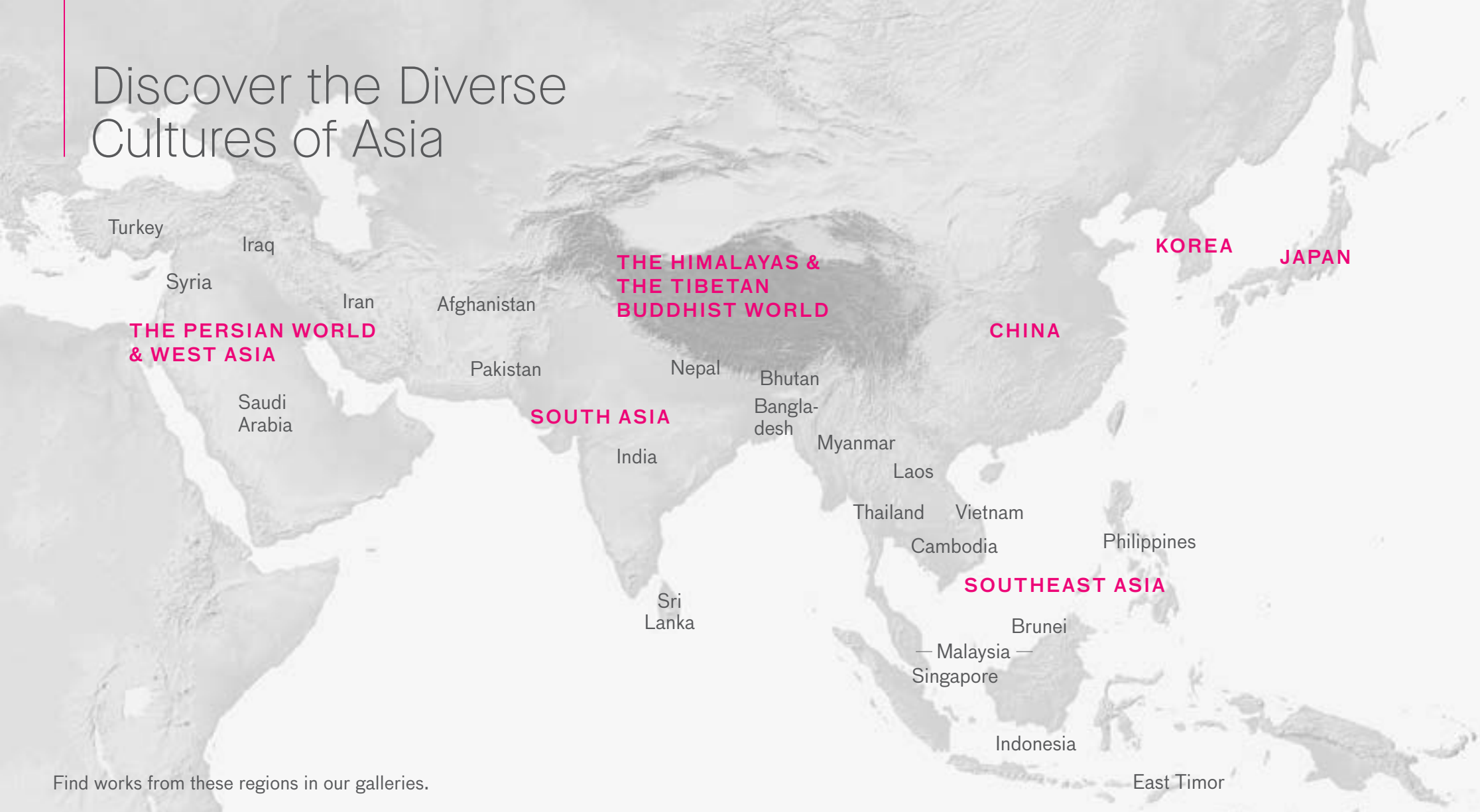
SHOP

Head to the Cha May Ching Museum Boutique for an expertly curated selection of items sourced from across Asia and from local artisans, plus an unparalleled selection of books about Asian art and culture.

SNAP AND SHARE #AsianArtMuseum @AsianArtMuseum

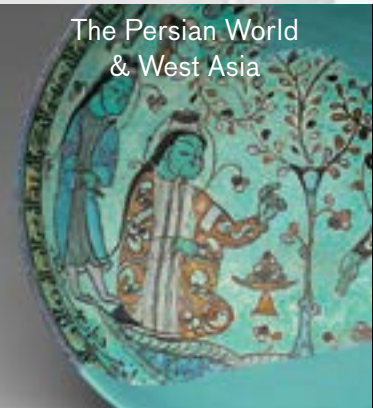
We encourage taking photos for your personal use (unless otherwise marked) and be sure to share your experience with us on social media. (Please, no flash, selfie sticks, or tripods.)

Discover the Diverse Cultures of Asia

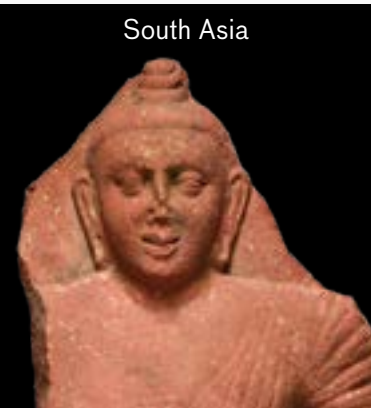


Find works from these regions in our galleries.

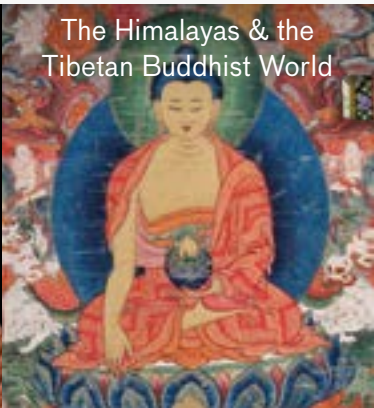
The Persian World
& West Asia



South Asia



The Himalayas & the
Tibetan Buddhist World



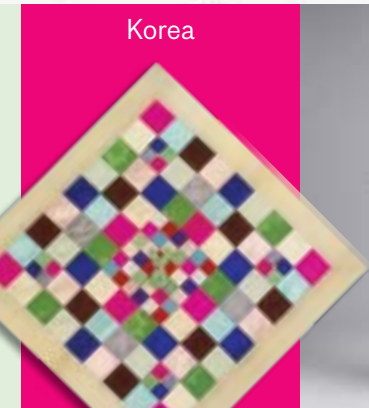
China



Southeast Asia



Korea



Japan



FIND
YOUR
OWN
PATH

Short on Time?

Discover exceptional works — singled out for their rarity, beauty, or historical significance — by following this path of masterpieces through our collection galleries.



The Buddha
triumphing over Mara
GALLERY 2



The Hindu deity Shiva
GALLERY 4



Cup with calligraphic
inscriptions
GALLERY 5



The Buddhist
deity Simhavaktra,
a *dakini*
GALLERY 12



Ritual vessel in the
shape of a rhinoceros
GALLERY 14

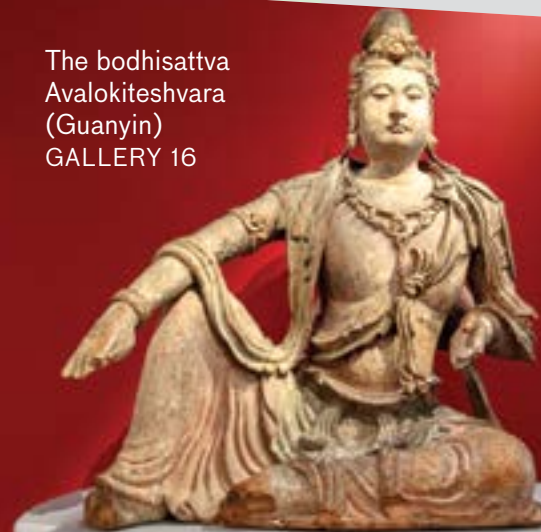


Buddha dated 338
GALLERY 16



Lidded jar with design
of a lotus pond
GALLERY 17

The bodhisattva
Avalokiteshvara
(Guanyin)
GALLERY 16



Ewer with
lotus-shaped lid
GALLERY 21



The Hindu deity Vishnu
GALLERY 8



Crowned and bejeweled
Buddha image and throne
GALLERY 11



Moon jar
GALLERY 23



The deities Brahma and Indra
(Bonten and Taishakuten)
GALLERY 26

Want More?

Take a self-guided tour
of 55 highlights from
our collection. Get
the Asian Art Museum
app on your phone.



FIND
YOUR
OWN
PATH

Looking for Contemporary Art?

Explore a rotating selection of modern and contemporary works from the collection in the **Hambrecht Contemporary Gallery** (first floor).

Head to the loggia for **Liu Jianhua's *Collected Letters*** and **Afruz Amighi's *My House, My Tomb*** in the Fang Family Launchpad (second floor).

Check out murals on the **Lui Art Wall** and **Wilbur Gallery** to see what makes artists tick. View from outside the museum on Hyde Street.

Let our curators lead the way with our **Contemporary Art mobile guide tour**. Download the tour from the free Asian Art Museum app.



FIND
YOUR
OWN
PATH

Visiting with Kids?

Take a family selfie with **Reina**, our 3,000-year-old bronze rhino (Gallery 14).

Dragon, turtle, pumpkin, or mouse? Find your favorite **Japanese miniature carving** (netsuke) (Gallery 27).

Use your free Asian Art Museum stylus to interact with the iPads in our galleries. Play videos, rotate 3D renderings, and take a closer look at our masterpieces.





FIND
YOUR
OWN
PATH

Want to Chill?

Find enlightenment with our **Meditative Art mobile guide**, available on the free Asian Art Museum app.

Purify your mind in the **Contemplative Alcove** (second floor).

Head to Bogart Court for **Zheng Chongbin's** site-specific installation, *I Look for the Sky* (first floor).

FIND
YOUR
OWN
PATH

Into Architecture?

Be awed by the **Wilbur Grand Staircase**, the centerpiece of our historic Beaux-Arts building, designed in 1917 as the city's main public library.

Take in the elegantly coffered ceiling of lofty **Samsung Hall**, which formerly housed the library's card catalogue (second floor).

Relax in the airy and spacious **Bogart and Bowes Courts** designed by Italian architect Gae Aulenti, who remodeled the former library to be the home of the Asian Art Museum in 2003 (first floor).

Head over to Hyde Street to see the dynamic faceted exterior of architect Kulapat Yantrasast's striking 2020 addition, the **Akiko Yamazaki and Jerry Yang Pavilion**.





A Museum for All

We strive to make the Asian Art Museum welcoming and accessible to all.

- Trained guide and service animals are welcome.
- Foldable, portable stools are available for use at the information desk.
- Audio descriptive guides and transcripts for our blind and low-vision visitors are available in multiple languages from the information desk.
- Large-print labels are available online for special exhibition galleries.
- Noise-dampening headphones are available at the information desk.
- For any other needs, please ask at the information desk.
- Check our website for a complete list of our accessibility initiatives.

Join Today

Apply today's ticket price toward a membership and get free admission all year long.

The benefits of an Asian Art Museum membership include free unlimited admission, priority registration for certain programs, discounted parking, cafe and boutique discounts, and more.

For more information or to join, stop by the membership desk in the lobby or visit us online at [aamuseum.org](#).

While You're Here

- The art should touch you — not the other way around. **Please admire without touching.**
- **Please no food or drinks in the galleries.**
- **Enjoy the moment by silencing cell phones** and refraining from phone conversations in the galleries.
- **We encourage you to take and share photos of your visit** for personal use only. Please no flash, selfie-sticks, or tripods — they can disturb other visitors and damage the art.
- We love when our visitors **sketch in the galleries** — please draw or take notes with pencils. Only have pens? Pencils are available for purchase in our museum store.
- **Have fun with little ones.** Strollers are allowed in the galleries, but you may be asked to park your stroller when the museum is crowded. Flip back a couple of pages for family-friendly activities.
- **You may be photographed or filmed by museum staff during your visit.** We may use these images in online or printed museum materials. Parents of minors will be asked for permission before filming.



At a Glance

FIRST FLOOR

Special Exhibition Galleries:

- Yang Yamazaki Pavilion (Opening 2021)
- Wilbur Gallery (Opening 2021)
- Lee Gallery
- Osher Gallery
- Hambrecht Contemporary Gallery
- Shriram Learning Center (Temporarily Closed)
- Koret Education Center (Temporarily Closed)
- Boutique
- Cafe (Temporarily Closed)

SECOND FLOOR

Collection Galleries:

- China
- Korea
- Japan
- Samsung Hall
- East West Bank Art Terrace (Opening 2021)
- Fang Family Launchpad
- Liu Jianhua's *Collected Letters*
- Tateuchi Gallery (Special Exhibitions)

THIRD FLOOR

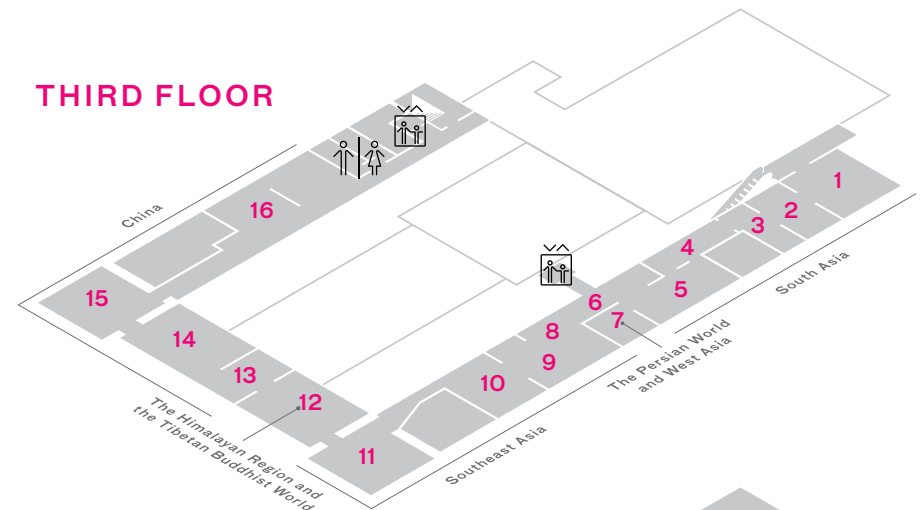
Collection Galleries:

- South Asia
- The Persian World and West Asia
- Southeast Asia
- The Himalayas and the Tibetan Buddhist World
- China

EXTERIOR

- Lui Art Wall
- Osher Plaza
- Village Artist Corner

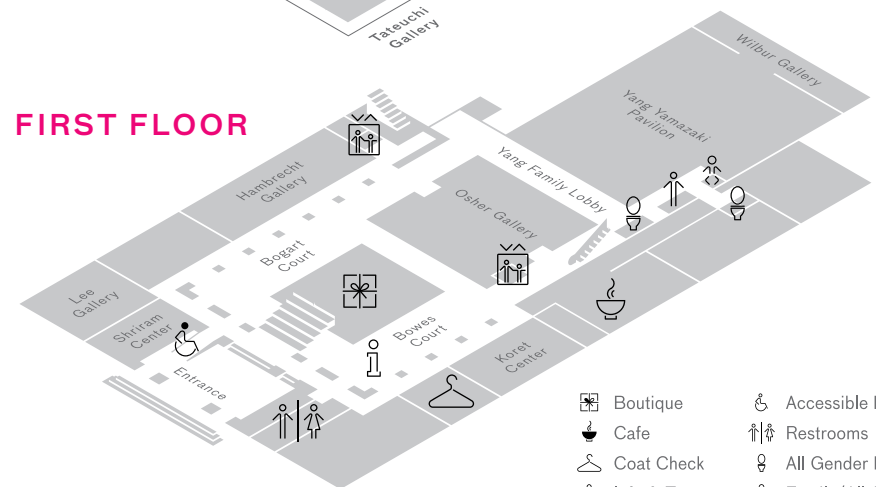
THIRD FLOOR



SECOND FLOOR



FIRST FLOOR



- Boutique
- Cafe
- Coat Check
- Info & Tours
- Elevator
- Accessible Ramp
- Restrooms
- All Gender Restroom
- Family/All Gender Restroom